

A photograph of a modern office interior. On the left, a desk with a chair and a bookshelf filled with books and binders is visible. The main part of the image is dominated by large windows with horizontal blinds, through which a city street and other buildings can be seen. A balcony with a glass railing and a white awning extends from the office. The text 'MANOLIS ANASTASAKIS' is overlaid in large orange letters, and 'ARCHITECTURE-PROJECTS-WORKS' is overlaid in smaller white letters below it.

MANOLIS ANASTASAKIS
ARCHITECTURE-PROJECTS-WORKS

CONTENTS

SHORT CV 3

LIST OF PROJECTS

• FLOW OF LIFE 4

• RIBBON TOWER 8

• MULTISCRAPER 10

• RETHINK ATHENS 12

• METAICHMIO EDITIONS OFFICE BUILDING 16

• LUXURY HOTEL IN SANTORINI 18

• IMEROVIGLI STUDIOS 20

• MINIMAL ROOM 22

• CULTURAL USES IN A NEOCLASSICAL BUILDING 26

• SMART DECKS 28

• TWO RESIDENCES IN MANI 30

• MARITIME RESEARCH INSTITUTE 32

• SEASHELL - LIGHTHOUSE 34

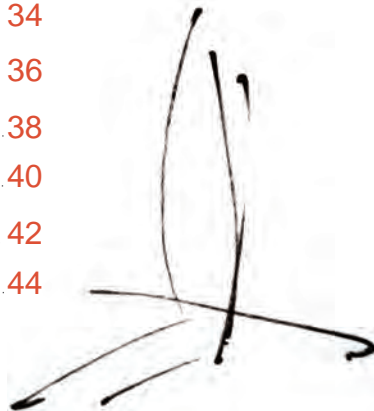
• HEROON SQUARE IN ELEFSINA 36

• GINKGO LEAVES 38

• LEAVES IN THE CITY 40

• INFO PAVEMENT 42

• KIOSK 44



Curriculum Vitae



MANOLIS ANASTASAKIS
ARCHITECT

Manolis Anastaskis is a DESA architect and a holder of the DEA post-graduate Diploma of the EHESS School.

He has studied multiple private and public projects and he often participates in architectural **competitions**, from which he has obtained many rewards and distinctions. He has published articles in specialized magazines and some of his works have been published in reviews and catalogues from architectural exhibitions. His drawings and projects have been presented in Greek and European exhibitions.

In the year 2006 he introduced the question over the construction of skyscrapers in Athens with his case study for a “**Multiscraper**” in the area of the ancient olive grove.

He is a consultant for the publication of the ***greekarchitects.gr*** e-magazine and chief editor of the architectural magazine ***GRA Review***.

He teaches at the Department of Interior architecture, Decoration and Design of the Technological Educational Institute of Athens, where he has supervised mote than 30 final year students’ papers so far.

His experience in designing school libraries is presented in his book: ***Redesigning Libraries for Schools: A proposal for secondary education*** (2003).

FLOW OF LIFE

Awarded Project (**honorable mention**) for the Spiretec Competition in New Delhi 2011

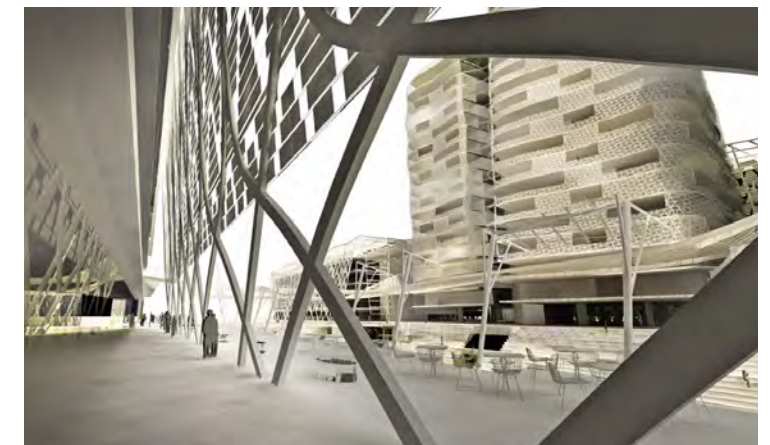
A proposal for an I.T. complex in India (2011)
(collaborator: D. Fragkias)



Large building compounds are usually planned around specific units scattered along the plot. In our concept, land, open spaces and build are equally important and their single conception and expression can produce a successful design. Our **proposal** relies on two major landscape components that generate the Masterplan.

We propose the introduction of the neighboring **water element** in the form of a water channel at the “heart” of the site. Two **esplanades** develop along each side of the water channel 7.20m above the ground. These two main compositional elements offer with clarity a rich architectural space to a multitude of public areas: terraces, decks, walkways, steps, open-air theatre, semi-covered spaces etc.

All spaces and both banks of the channel are unified by a **structural ribbon** crossing through the land from side to side. This ribbon is transmuted along its way to roof cover, shelter, cover for paths, bridge and building skin. In this design proposal, the liquidity of the water became a solid organizational element and the materiality of the ribbon turned to a fluid and transitional space structure. The everyday life flows with them.





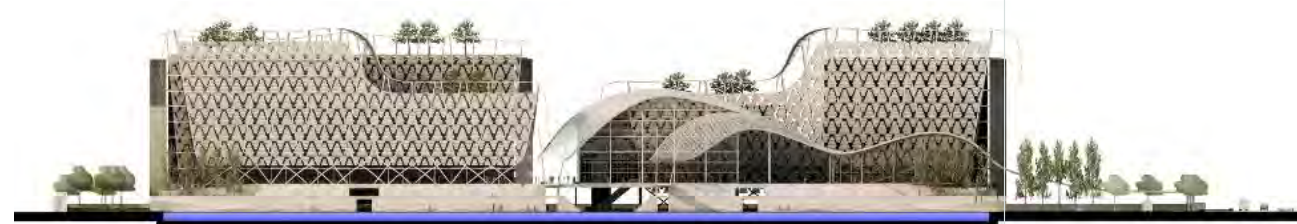
VIEW FROM THE ESPLANADES



VIEW FROM THE TOP



ESPLANADE LEVEL +7m



SOUTH FACADE - Auditorium and Library



NORTH FACADE - Residences and Hotel



MASTERPLAN

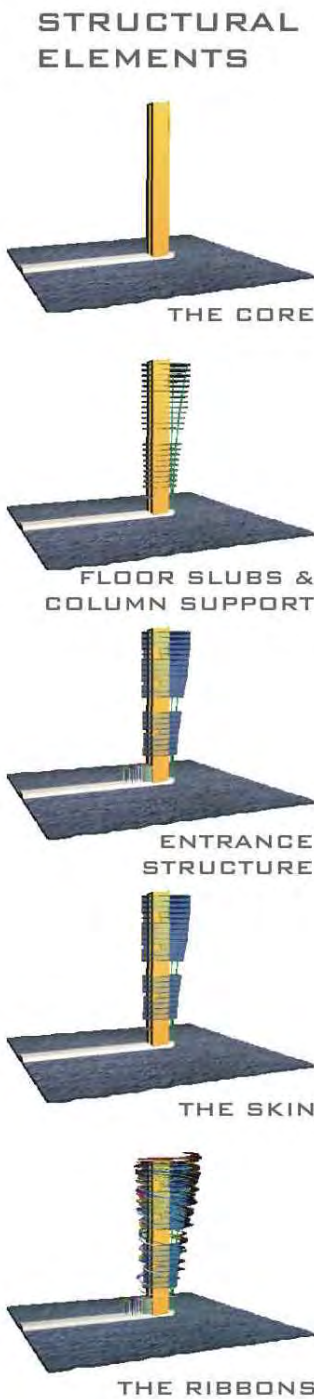
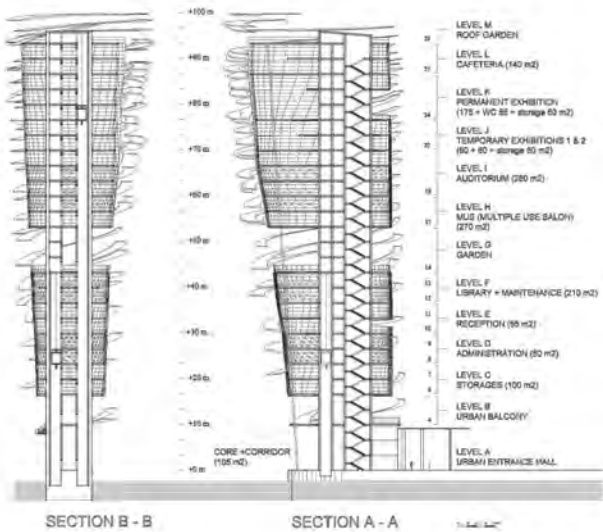
RIBBON-TOWER

Urban Competition New York for a Tower Museum in Manhattan

Skyscraper Design (2007)
(collaborator: D. Fragkias)

The new Tower-Museum “**The Ribbon-Tower**”, arises from the complex and dynamic travelling of structural ribbons. The sum of these ribbons symbolizes the multicultural character of 21st century New York City. The multicolored ribbons represent the different cultural worlds of the immigrants arriving to NYC, who are aspired of integrating into the American society. These ribbons, colorful and chaotic on the top converge and in geometrical progression descend becoming one white ribbon - a monumental staircase to the end level of the pier. In this context, the unified ribbon has successfully become part of the New York soil.

The “**Ribbon-Tower**”, as an architectural monument, emphasizes the multi-provenance and multi-colorfulness of the city’s immigrants in the context of the **melting pot character** of NYC. The final white ribbon, which is the sum of all the colors, enriches the city’s culture by its diffusion via the multi-colored awning of the Tower’s main entrance as a series of wave shapes.



Manolis Anastasakis



LOCATION PLAN



POSITION IN THE CITY

Architecture - Work - Projects



PHOTOREALISTIC VIEW

MULTISCRAPER

A skyscraper in Athens (2006)

Our proposal is the construction of a symbol building in the under regeneration area of Eleonas.

The emergence of the towers out of the ground as **olive tree leaves** and the natural landscape of the olive grove of Athens that will be restored, constitute links with the physical and cultural history of the site.

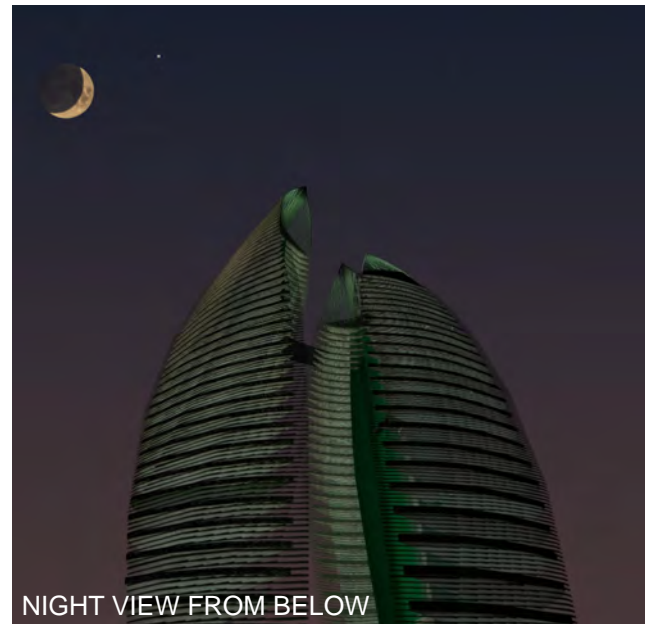
The proposed high-rise buildings (West Athens Towers, WAT) will constitute a powerful tool for urban regeneration and will lend a new dynamic to the region. They will enrich the skyline of Athens with a shape that conveys the meaning of the site and will become a **dynamic symbol** that will consolidate its position as the largest metropolis in the Mediterranean.



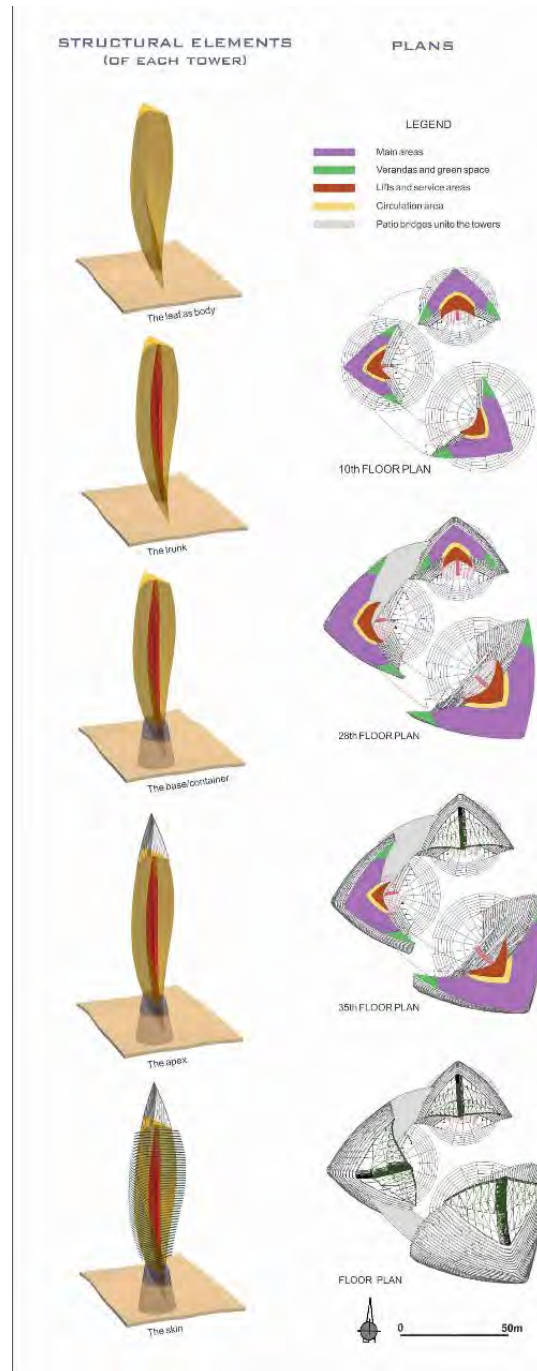
LOCATION PLAN



NIGHT VIEW



NIGHT VIEW FROM BELOW



PHOTOREALISTIC VIEW

REVEALING THE LAND

European Architectural Competition Rethink Athens (2012)

Our **proposal** aims to unfold the natural sub-layer of the city – the land – and to point out the idea that nature and urban elements are interwoven and interdependent.

The main **concept** in our design is to uncover the Attica's physical substratum as well as the Athenian historical layers, in a creative way. The land becomes the structuring and unifying element of the site. A dynamic relation is thus created between natural and artificial elements, which allows the creation of a new urban open space that is flexible and adaptable to changes.

The **design** relies on a unifying and strong ground surface element (unfolded natural soil, use of earthly materials, emersion of underground water and plantation of native vegetation). While the use of the flexible and discrete grid for the urban fittings highlights the urban front and the significant buildings.

Our **strategy** aims in revitalising the urban center of Athens by creating divers and stimulating public spaces where people can meet, engage and communicate in an environment that underpins the natural, historical and architectural heritage of the city.



AERIAL VIEW OF THE TRILOGY OF ATHENS



MASTERPLAN



VIEW OF OMONOIA SQUARE



VIEW OF DIKAIOSINIS SQUARE



LONGITUDINAL SECTION OF PANEPISTIMIOU STREET

METAICHMIO EDITIONS OFFICE BUILDING



**An eight-storey office building in the center of Athens
Athens, Greece (2002-2005)**

The new office building is being constructed on a small narrow-fronted lot, to be integrated into the row-building system of a densely populated district. The facade must include an arcade. The aim of the design is to create open, flexible working spaces. The ground plan is organised by a structure that serves a dual functional and structural purpose, and is expressed on the main elevation by a dual **asymmetrical composition**. The materials on the facade have been selected in their natural form so as not to require paint. They highlight the central composition of two asymmetrically projected surfaces.



Manolis Anastasakis

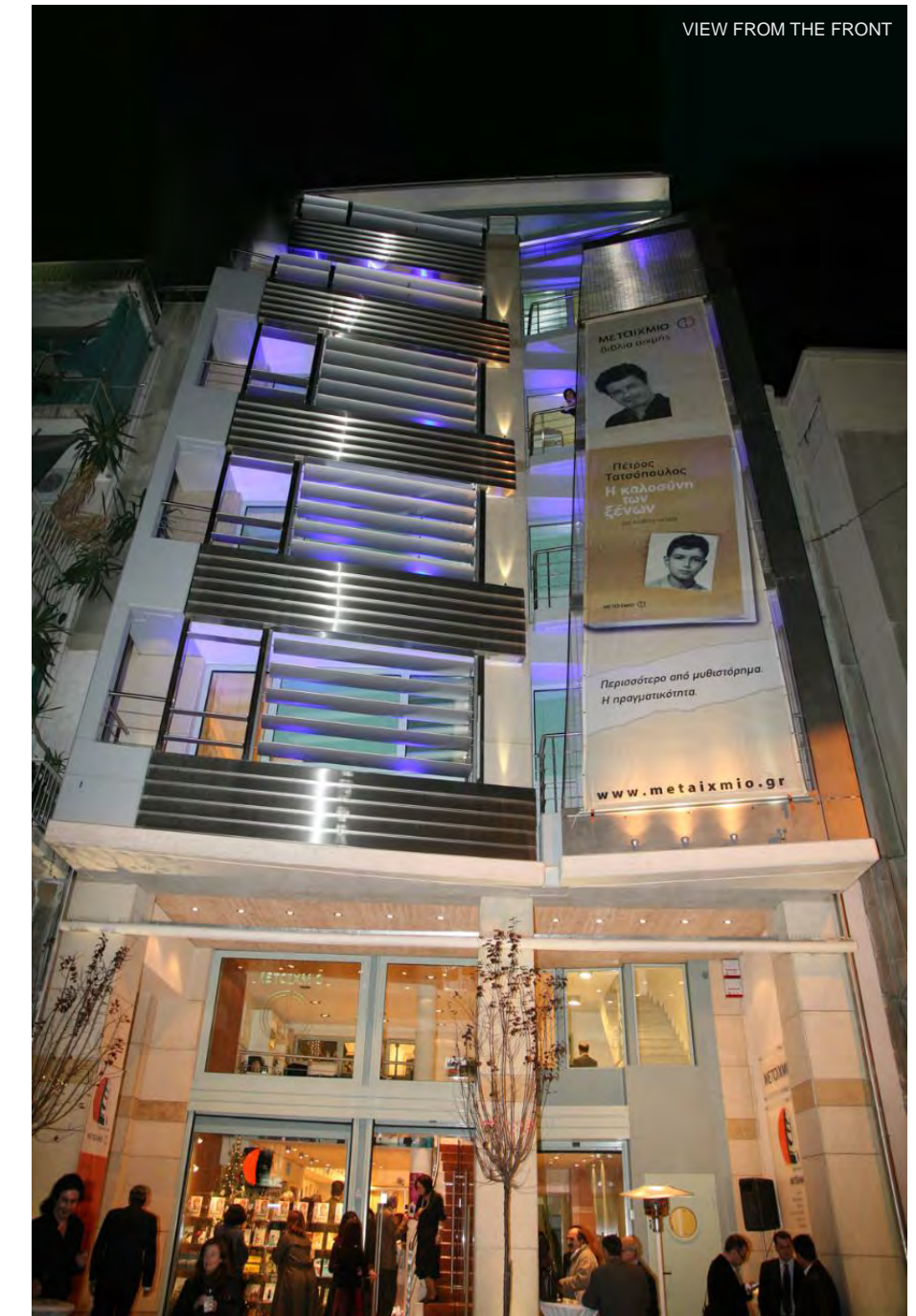


FLOOR PLAN



FACADE

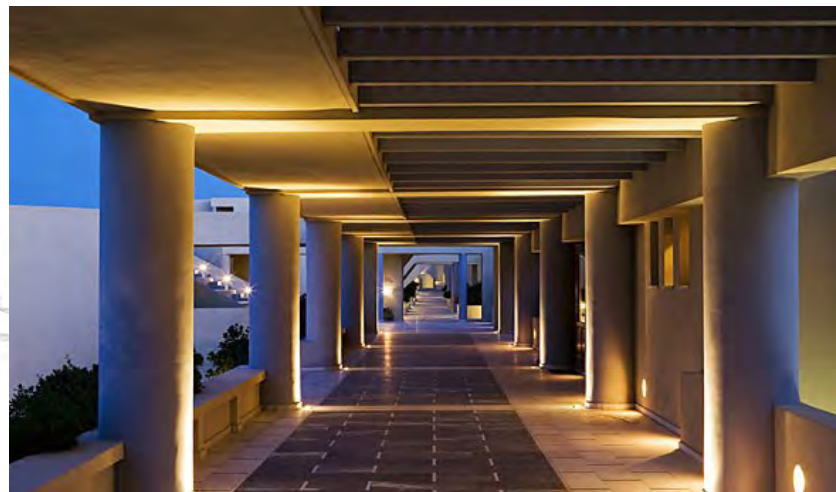
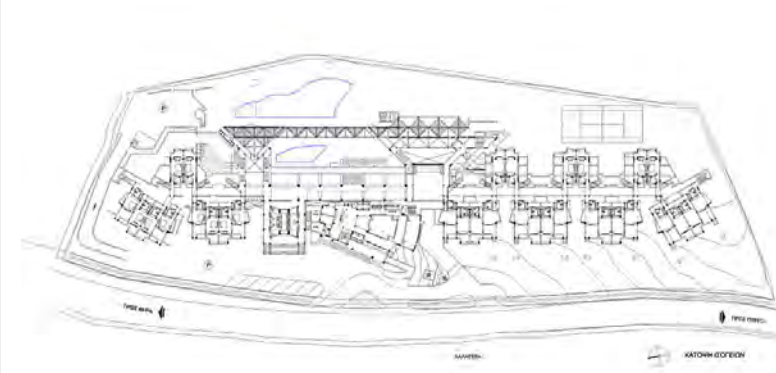
Architecture - Work - Projects



“MAJESTIC” HOTEL IN SANTORINI

A 110 beds luxury hotel in Santorini (1996-2004)
(with the architect Zisis Kotionis)

A residential complex of independent volumes is organized along an internal road of an oblong 12 acres lot. Room complexes are arranged on either side of the entire length of this **linear development**. All main functions are settled in separate volumes at the centre of the street to create a shaped open space square which leads finally to more enclosed spaces for the visitors (pool, restaurant, bar). Each separate building has its own typological and morphological expression unified by the colonnade along the main facade.

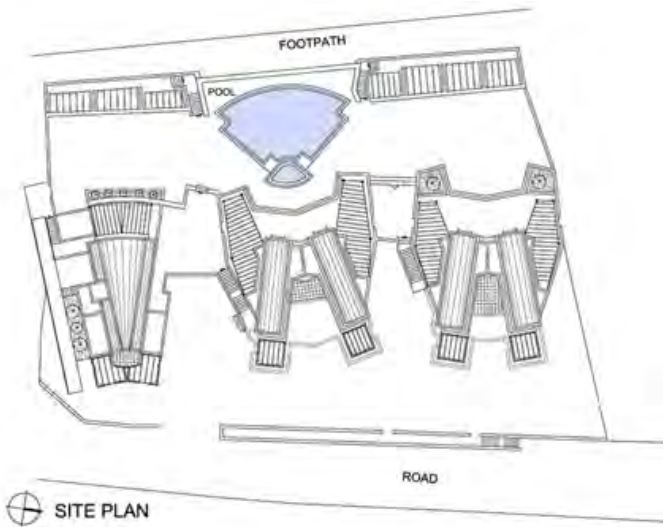


IMEROVIGLI STUDIOS

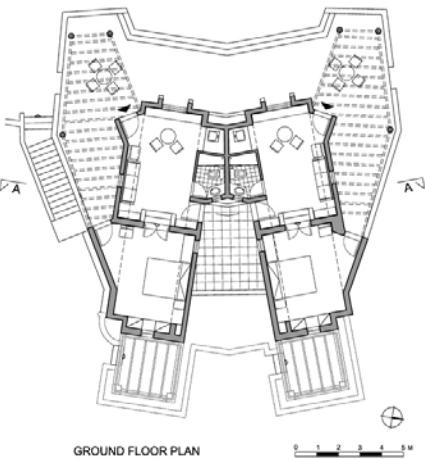
A complex of 12 luxury vacation studios
Imerovigli-Santorini, Greece (1994-2001)
(with the architect Zisis Kotionis)

This unit of these two small identical vacation houses in Santorini island, is part of a complex of 8 residences located right on the edge of the island's water filled caldera. They all offer an excellent view to the west, overlooking the sea and the volcanic craters.

The floor plan of the two houses is developed in 'V' schape that allows the formation of small communal yards both at the front and the back side of the houses, while the secondary uses (WC and kitchenette) are positioned at their convergence point. At the same time, larger and more private yards are created for both houses further from one another. These private yards are coveres with pergolas whose general plan has the shape of [open wings](#). Their design is integrated into the general design of the houses, making it even more dynamic.



SITE PLAN



GROUND FLOOR PLAN



MINIMAL ROOM

1st International prize in the Interior design competition Suite D' Autore (2009)

A minimal hotel room

(collaborator: D. Fragkias)

Subject of the competition was the proposal for a complete interior design (furniture and artifacts of communication included) of 14 themed rooms of the concept hotel Suite D' Autore. The suites should be conceived as a space that delivers, apart from the basic commodities, a canvas for cultural encounters, art events, as well as educational relevant uses. Inside the shell of this historical 15th century "palazzo" in Palermo the guest should be transformed into an actor on the stage and at the same time a spectator in the stalls, stimulated on every sensory level, ready to converse a clear memory as a keepsake for his return home. **"The concept of the surface"** is the title of the proposal. Mies van der Rohe's less is more, with its propensity towards the subtraction and elimination of everything that is superfluous, clearly exemplifies the philosophy of **minimalism**. Minimal objects are, by their very nature, reduced to their essence, but is it possible to plan a minimal space without its becoming boring, indifferent, insignificant, devoid of any attraction?



BATHROOM'S DETAILS



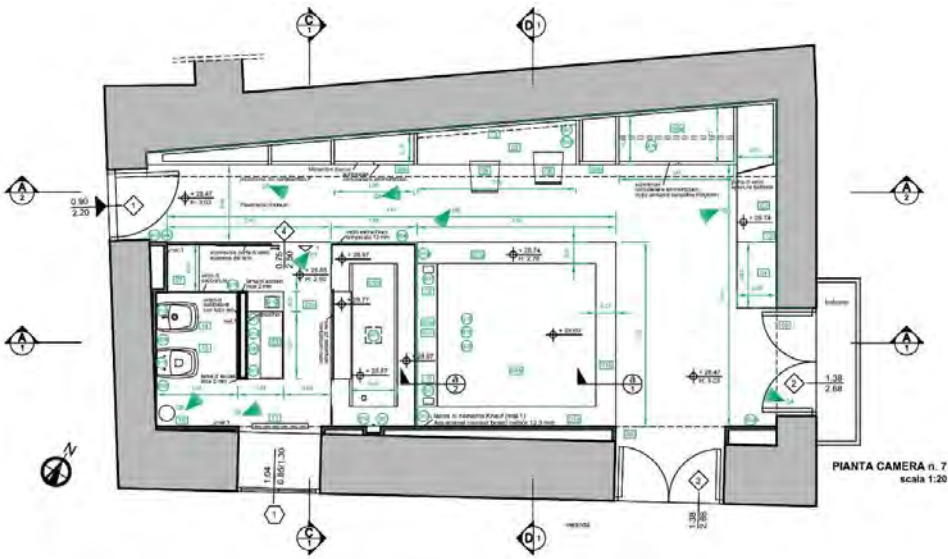
BATHROOM'S PERSPECTIVE VIEW



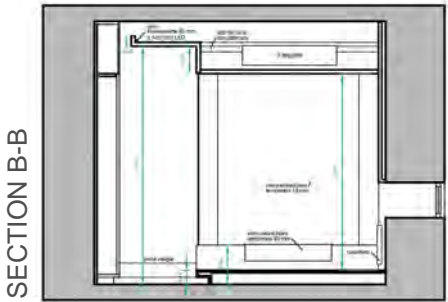
PHOTOREALISTIC VIEW



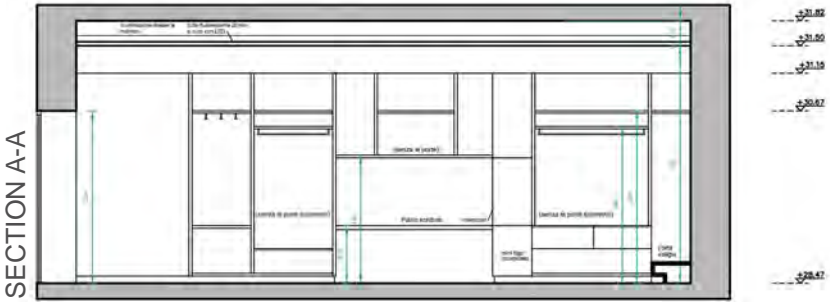
PHOTOREALISTIC VIEW



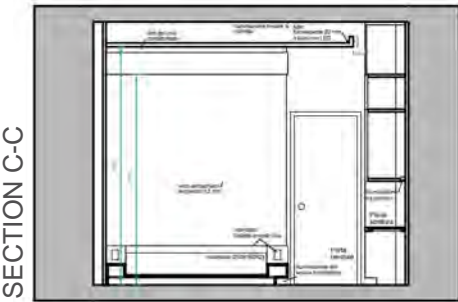
GROUND PLAN



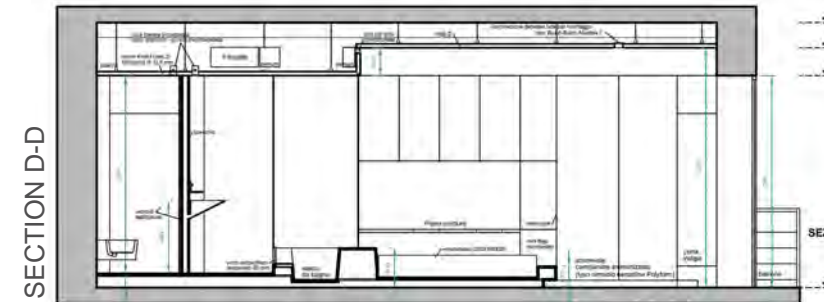
SECTION B-B



SECTION A-A



SECTION C-C



SECTION D-D

CULTURAL USES IN A NEOCLASSICAL BUILDING

Restoration study for a preserved building (2008)

The **aim** of the competition was the housing of new uses in the preserved building of the 3rd Primary School of Chalkida.

The intervention's **goal** is to meet the additional needs of the pupils, the restoration and rescue of the building, as well as its emergence as an important monument for the history of the city's architecture. Furthermore, the building is being aesthetically upgraded on the basis of historically documented elements and the surrounding space is being integrated into the functions of the school and the city.

The **proposed intervention** is based on generally accepted principles of preservation and restoration in combination with the building's special conditions and facts. The principles of this intervention are the conservation and preservation of as many architectural elements of the building as possible and the consideration of its notable historical stages through the use of traditional materials and construction methods, where possible. Most of the proposed interventions are **reversible**, while the new structures and the functionally necessary additions are integrated into the building in such a way that they are distinctive from the existing structure.



MULTIPURPOSE ROOM



MAIN FACADE



LIBRARY

SMART DECKS

“Smart Decks” for the One Prize 2014 Competition

(collaborators: K. Kyriou, N. Spyrou)

The proposal of Smart Dock’s educational space is shaped by a concept of “**Smart Decks**” that makes use of moveable platforms in all levels to create vibrant, flexible and multi-uses spaces. The **platforms/ decks** refer to a ship’s decks and are projected to the building’s interior.

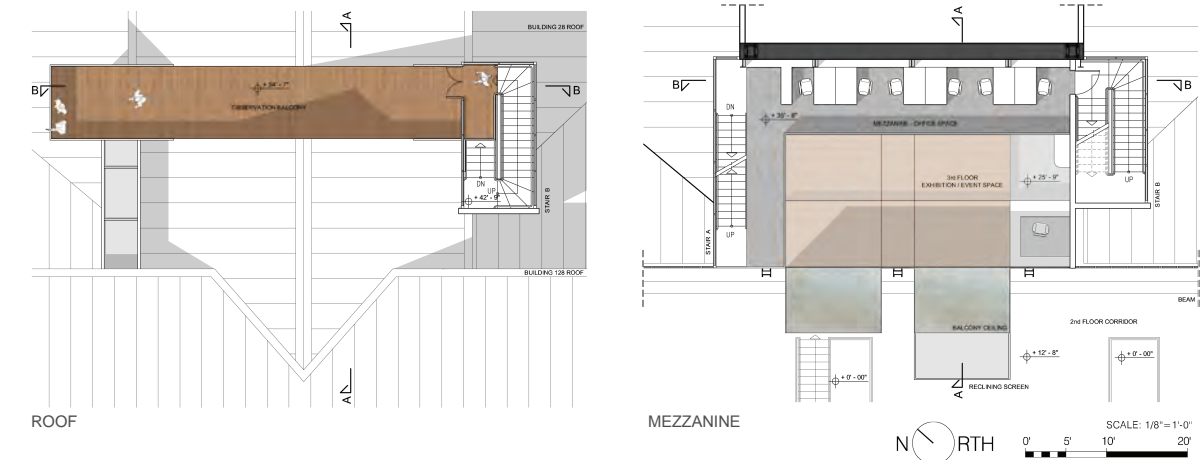
These 4 functional deck-boxes form the **visual reference** of the ONE Lab Smart Dock Area. The smart deck-boxes increase the interior space and could be either closed or opened depending on the needs of the users. They are projected in a dynamic and attractive way.

The facades of the decks are vertically retractable “**screen windows**” that show information about the program and the events. The 3rd floor is designed to host events and exhibitions: the moveable platforms are transformed either to create a flat level or to form 3 different levels by creating an

amphitheatrical space for presentations. Furthermore, a variety of **spatial configuration** is possible. The mezzanine is dedicated for office space and the 4th floor is used for studio and workspace. The south staircase B leads to an **observation deck**.



VIEW FROM THE INTERIOR OF THE BUILDING

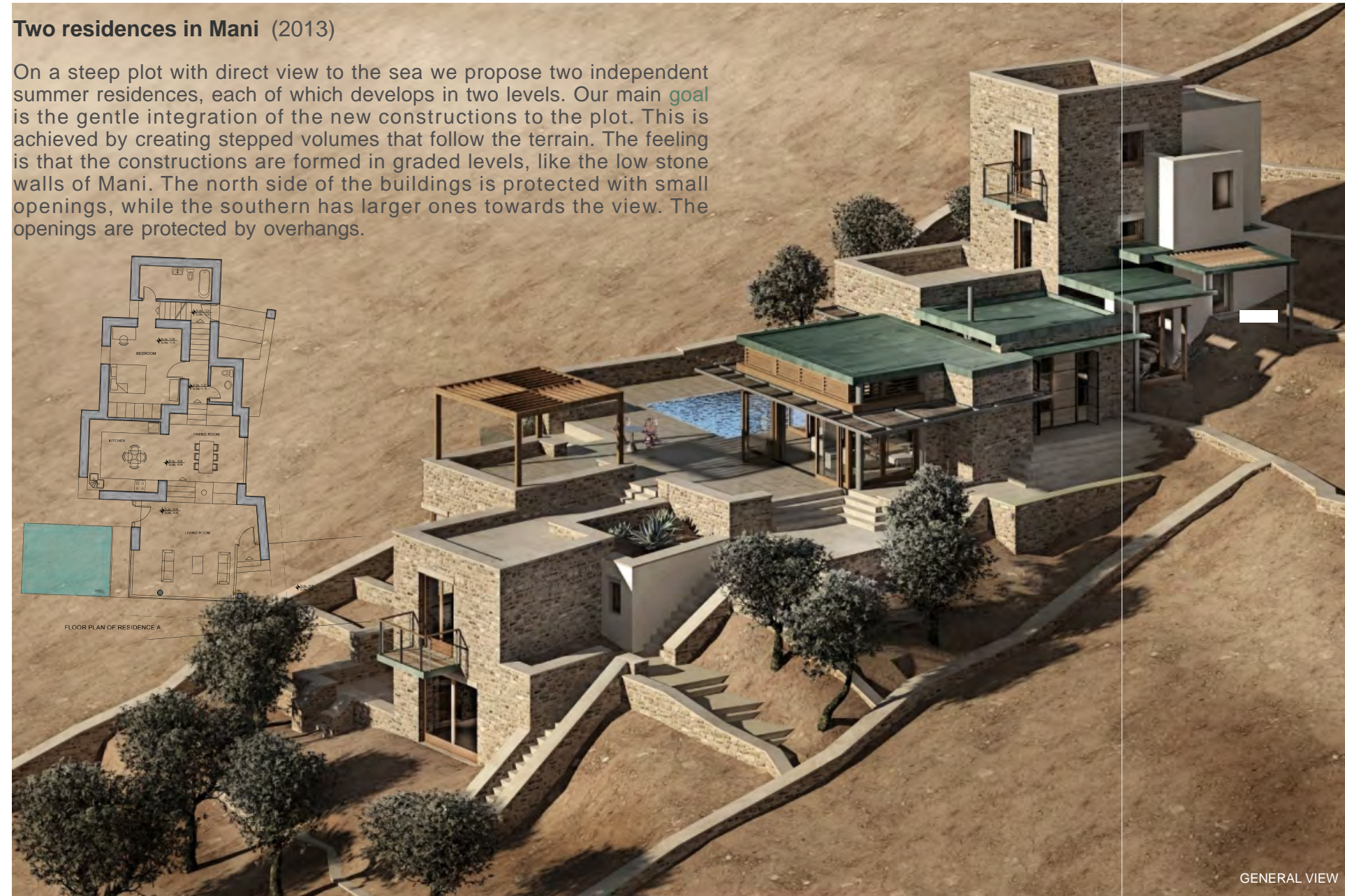


EXHIBITION / EVENTS SPACE

TWO RESIDENCES IN MANI

Two residences in Mani (2013)

On a steep plot with direct view to the sea we propose two independent summer residences, each of which develops in two levels. Our main goal is the gentle integration of the new constructions to the plot. This is achieved by creating stepped volumes that follow the terrain. The feeling is that the constructions are formed in graded levels, like the low stone walls of Mani. The north side of the buildings is protected with small openings, while the southern has larger ones towards the view. The openings are protected by overhangs.



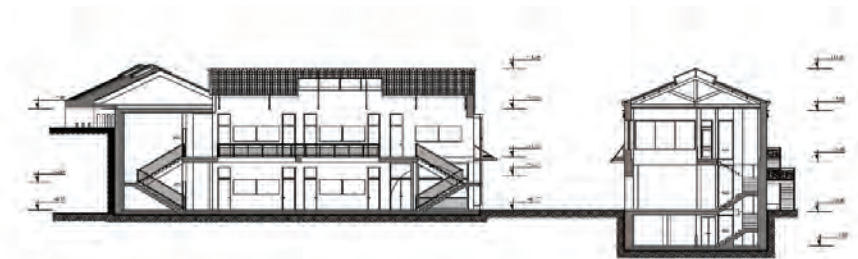
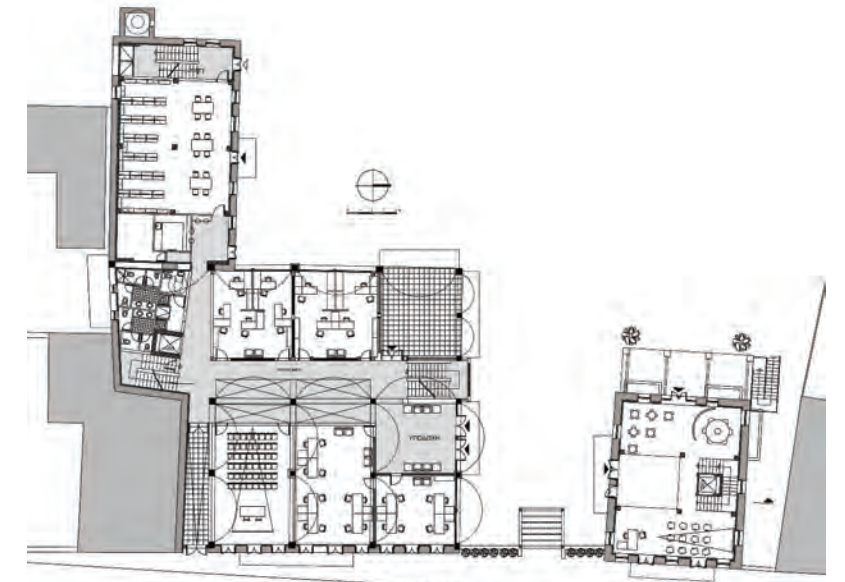
MARITIME RESEARCH INSTITUTE

Renovation of industrial buildings in a new University Institute
Island of Chios (2004)

(Client: Aegean University)

An open space is proposed between the two MRI buildings to constitute a link and an entrance point. In this way access to the buildings is friendlier and more convenient and, at the same time, is screened from vehicular traffic. The layout of the interior space combines structural elements with functional needs. The main intention of the design is for the entrance and walkways to constitute an interior public space suitable for meeting and sitting.

The basic idea is to provide **functional** and **visual communication** between the two levels of the buildings. This is achieved by creating **spaces** over the main walkways. These spaces foster direct optical contact between the two levels, and are created at points where interesting structural and morphological features of the building can be highlighted, such as stone masonry, arches, frames, etc.



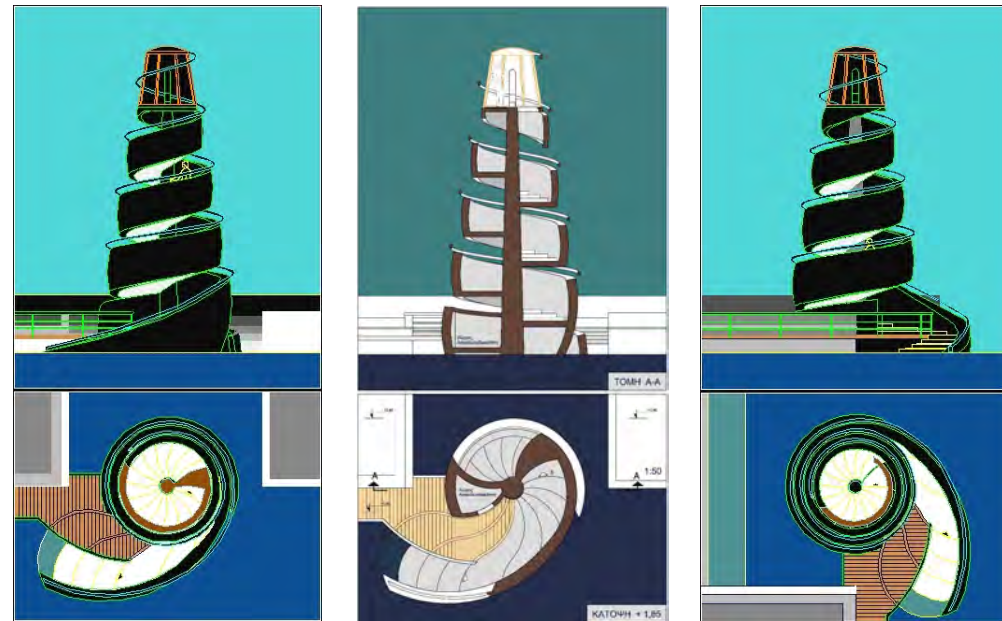
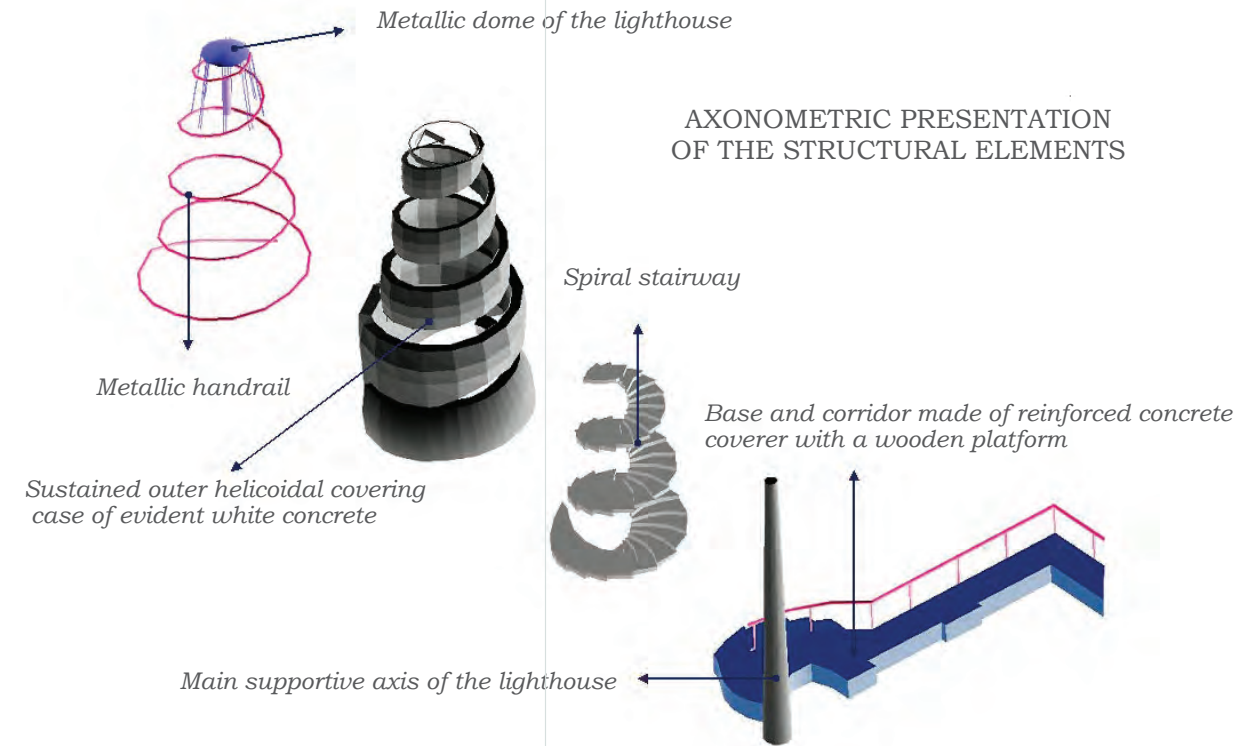
SEASHELL-LIGHTHOUSE

A proposal for a lighthouse at the Volos port (2001)

Client: Port Authority of Volos

The lighthouse in the Port is a Seashell Lighthouse. It is a construction, which form with its helicoidal development refers to the threads of a seashell. However, it is possible that the Lighthouse can be perceived not only as a Lighthouse in the form of a shell, but also as a giant seashell that emerged from the sea and became a Lighthouse, a Seashell Lighthouse. The idea of the Synthesis is based on the union of these two types:

The first (lighthouse), that concerns artificial structures which rise up with a slightly conical form, and the second (seashell), that concerns natural geometrical forms, which have been crystallized into different types of oyster shells.



LIGHTHOUSE IN THE PORT OF VOLOS



HEROON SQUARE IN ELEFSINA

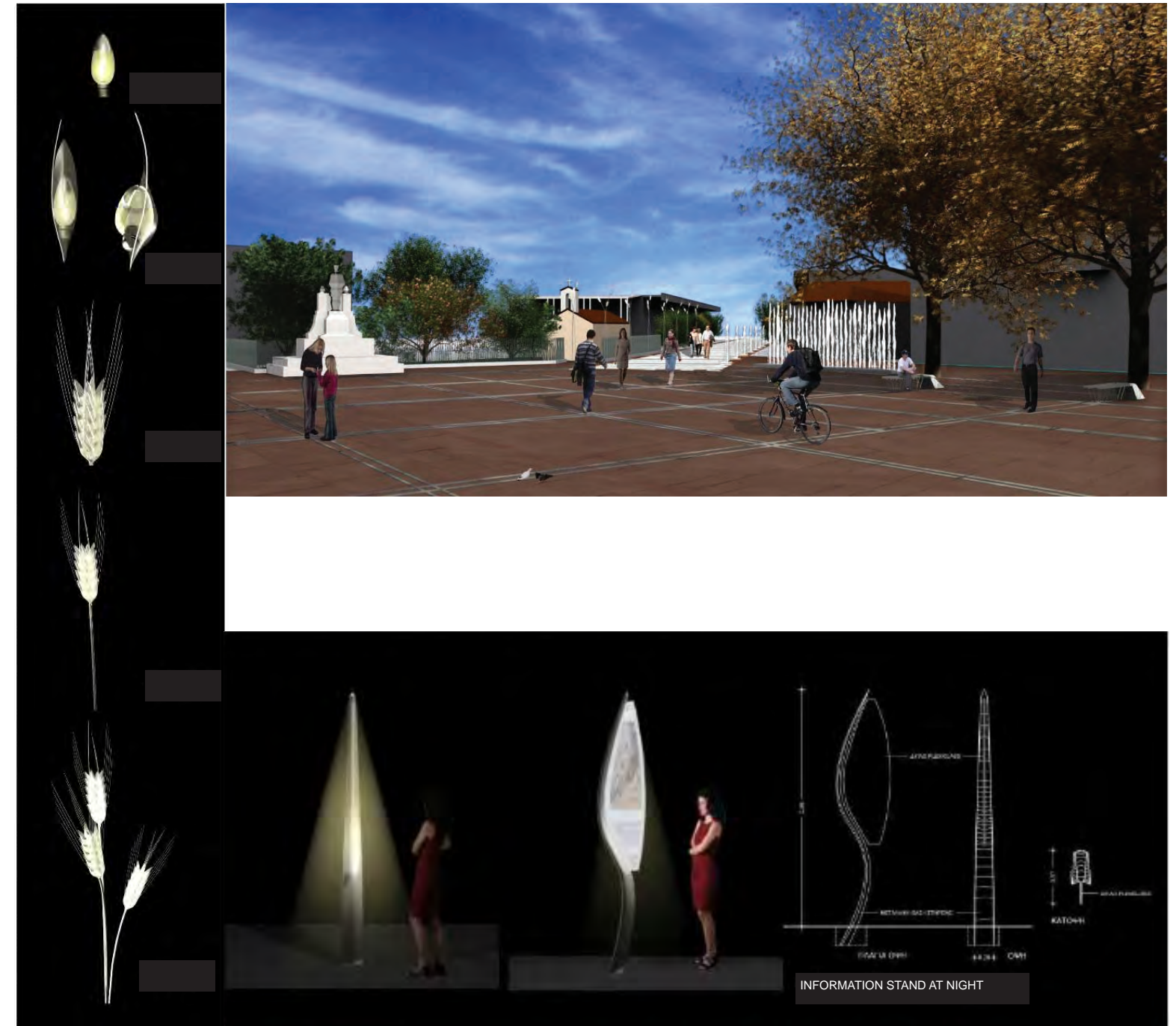
Competition for the design of the “Heroon Square” in Elefsina (2007)

(Collaborators: P. Patakou, A. Tomadaki, D. Fragias)

In what way can the ‘Heroon Square’, the axis of Iera Odos and their relationship with the neighbouring archeological site be handled through design?

Our proposal answers these questions suggesting the conjunction of the open public space with the history of the place. It is pursued that the new designed elements will refer to the significant archeological space and simultaneously become the occasion for a contemporary design. The proposal appropriates the historical reference in order for the square to obtain a contemporary character and convert it into an open space to host the activities of the citizens. This enables the creation of open public spaces which are referred to the **local community** and in the same time highlights the **importance of the site for the whole region**.

The principal design idea is the creation of an open space from which extends diagonally across a powerful symbolic axis (Iera Odos). The unity axis-square becomes a **cultural reference** that gives to location a hypertopical meaning and importance.



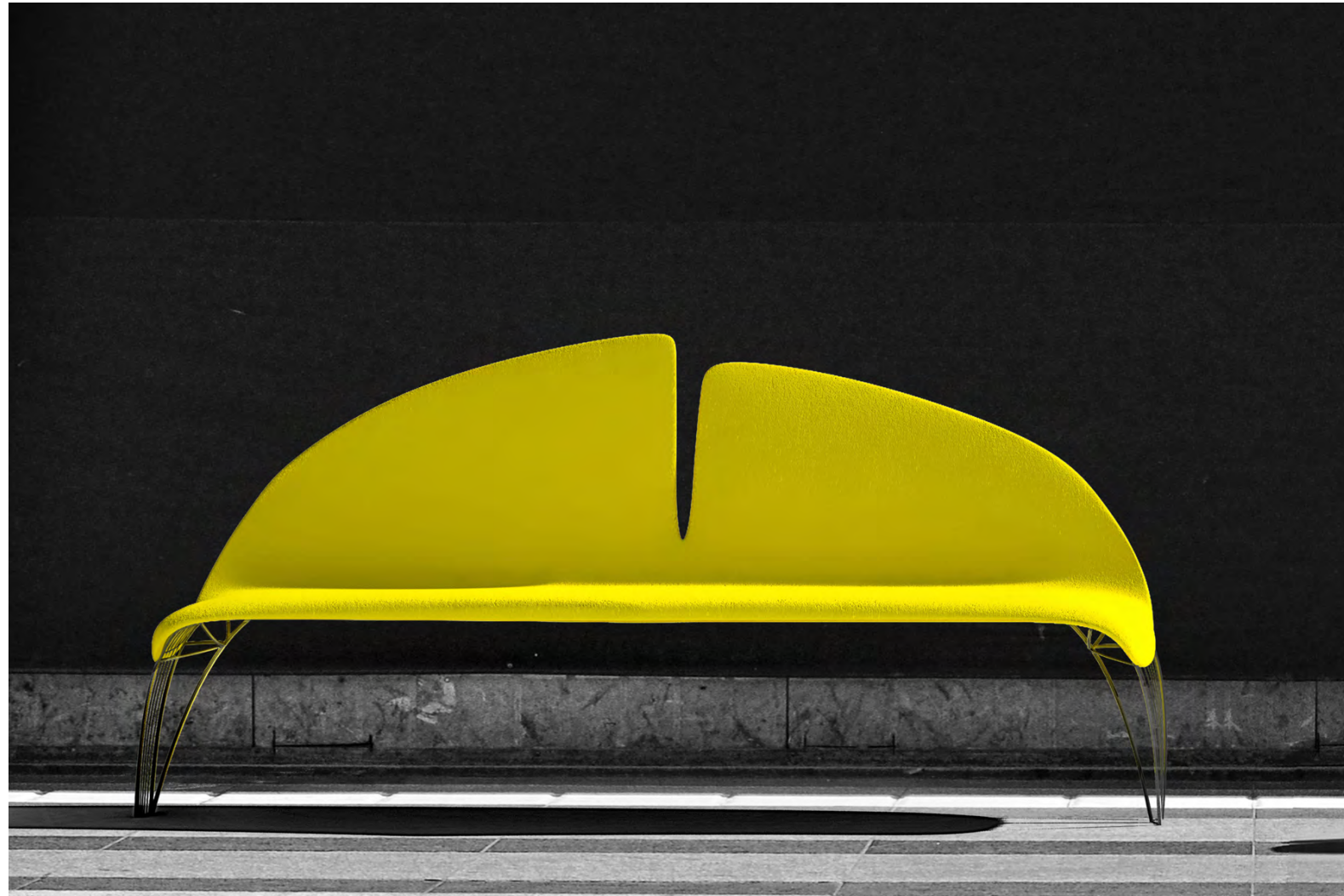
GINGKO LEAVES

Golden Award for the 2011 Seoul Public Design Competition

A proposal for a public bench (2011)

(collaborator: D. Fragias)

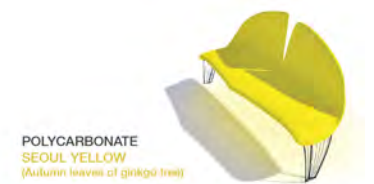
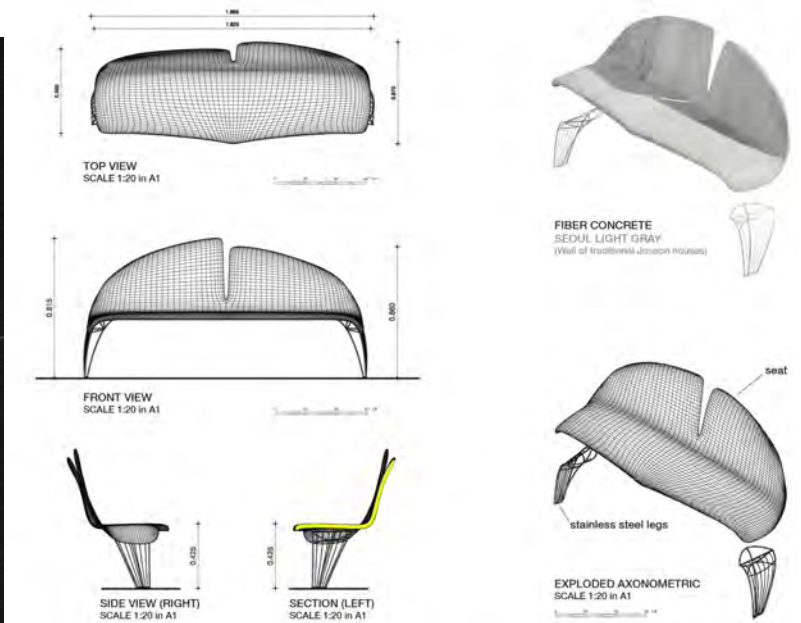
The “**leaf bench**” embodies the natural (ginkgo tree) and cultural (tree of life, unity of opposites) history offering Seoul a new stylish urban unit. It becomes an element of the city's public equipment referring allusively to the form of a **ginkgo tree leaf**. This connection between the form of the bench and its location make it a unique and iconic element for Seoul.



A variety of available trims highlights the fluidity of the form. The available choices of different materials of construction for different areas of the city help it blend in without losing its design identity. Proposed construction materials, in a variety of colors, are perforated stainless steel sheets (2mm), fiber reinforced concrete (30-40 mm), high grade polycarbonate (30-40 mm) and bamboo plywood (30 mm).

The proposed colors are based on the 10 Seoul Representative Colors with the addition of natural bamboo finish.

Made of stainless steel, high grade polycarbonate, fiber reinforced concrete or bamboo and in various colors the Ginkgo Leaf Bench equips the city in a simple and natural way. All materials can be recycled and reused.



LEAVES IN THE CITY



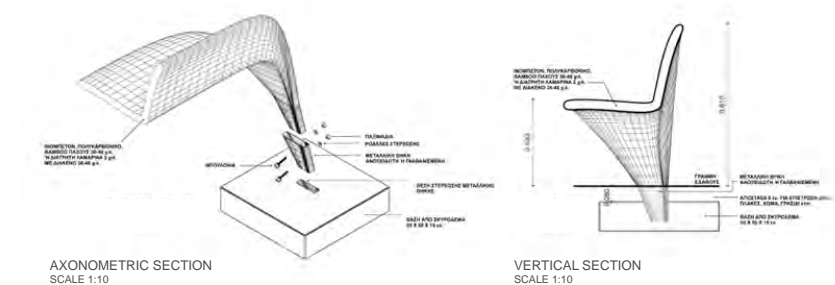
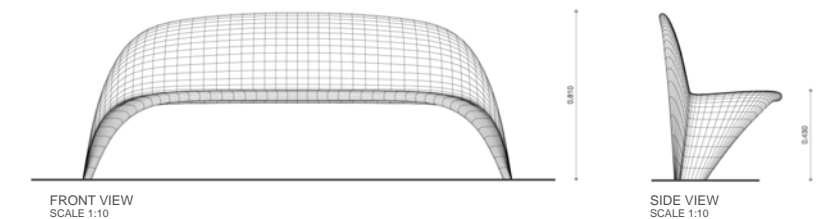
“Leaves in the city” for the AthensBenchmark Competition (2010)

A bench inspired by an olive leaf

The leaf-bench is an item of urban equipment with a form subtly reminiscent of an **olive tree leaf**.

The fluidity of its form can be applied over a variety of materials. The ability to produce the bench in various finishes allows for a different choice of material to match different parts of the city without sacrificing its basic design identity.

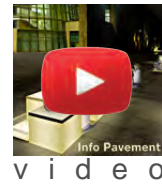
The Leaf Bench can be produced in perforated stainless steel, fiber reinforced concrete (FRC), polycarbonate and bamboo.



INFO PAVEMENT

Awarded Project (**honorable mention**) for the
“2011 Seoul Public Design Competition”

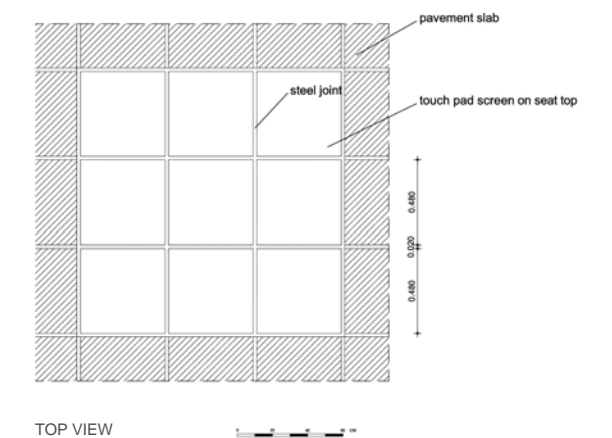
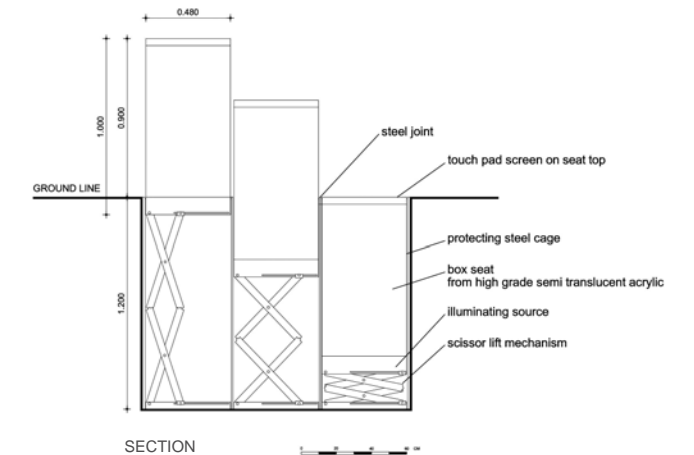
Urban equipment design (2011)



Technological advanced societies require the kind of public equipment that offers **flexibility**, **multimodal interaction**, **multitasking** and **information**. Collapsible seat boxes with **touch screen** top surfaces in the size of a pavement plate (50x50 cm) will be installed as part of the pavement in selected spots of the city.

This screen, protected by a **high-grade translucent polycarbonate**, can either sit idle, serve as floor lighting, project general information or connect to the World Wide Web. This construction, serving as a **media box** or even a low level **public lighting** fixture, can be either on pavement level or extruded gradually and smoothly via a hydraulic scissor lift mechanism at 45 cm above it to create a **seat** or at 90 cm to create

an **information surface**. Movement control can be individually activated on the touch screen or remotely controlled via cell phones. The benefit of this proposal is the on demand use as a digital interactive surface, as a seat or even retracted to free up walking public space.



CITY KIOSK

Distinctive and dynamic kiosk (2013)

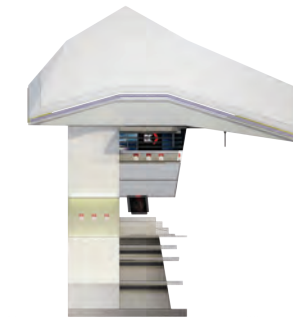
Design of a city kiosk for a tobacco company with distinctive and dynamic character.



PLAN



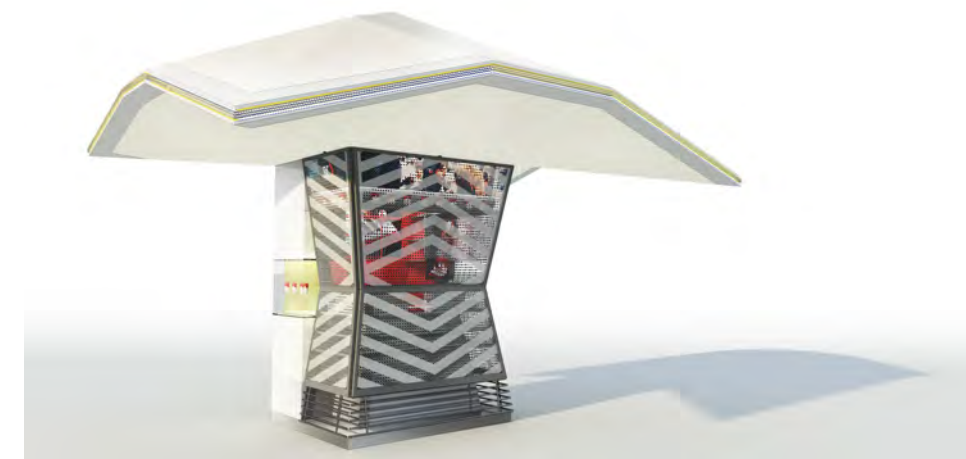
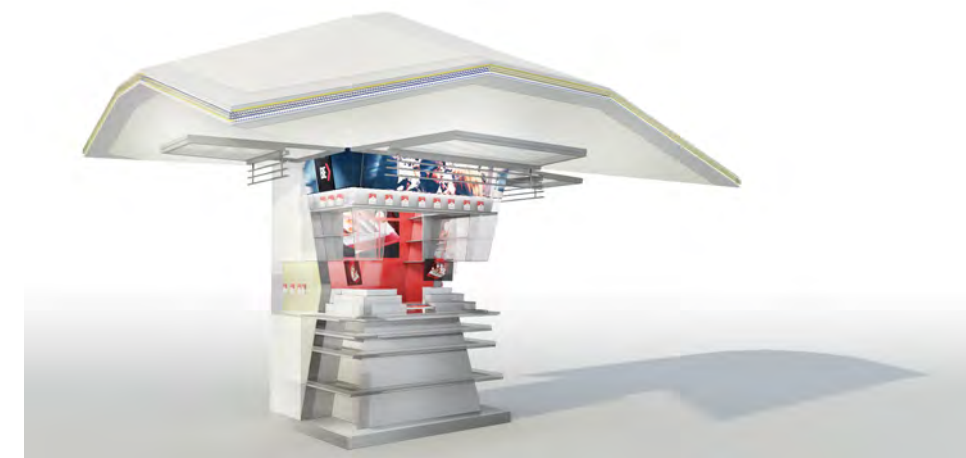
FRONT VIEW



SIDE VIEW



BACK VIEW



URL: www.anastasakis.gr/eu
www.maa.gr
www.maad-team.blogspot.com

Address: 33-35 Drakou Str., Athens 11742

Tel.: +30 210 9242868
Fax: +30 210 9242830
Email: anastasakis@tee.gr

manolis anastasakis
a r c h i t e c t s
www.anastasakis.gr

